

Homework #5: DC Transfer
ECEn 451
Dr. David A. Penry

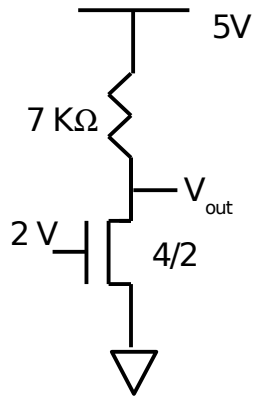
Answer the following questions:

1. Problem 2.10(a)

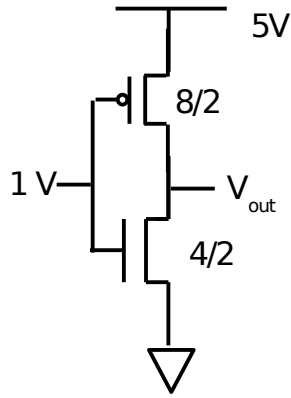
2. Find V_{out} for the following circuits.

Assume $V_{tn} = 0.8V$, $V_{tp} = -0.6V$, $K_{pn} = 70 \mu A/V^2$, $K_{pp} = 30 \mu A/V^2$. Transistor dimensions are given as W/L . Note that problem (c) is similar to a NOR gate with one input switching.

a)



b)



c)

